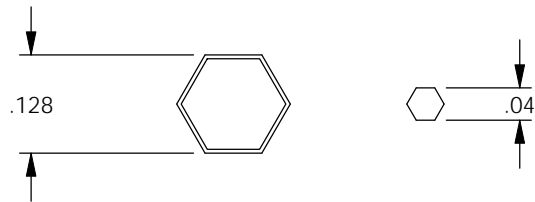
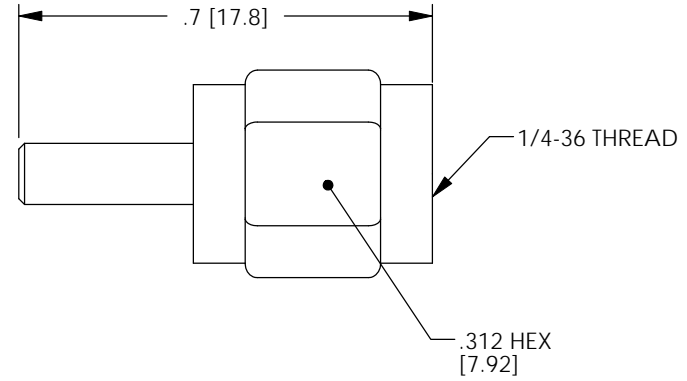
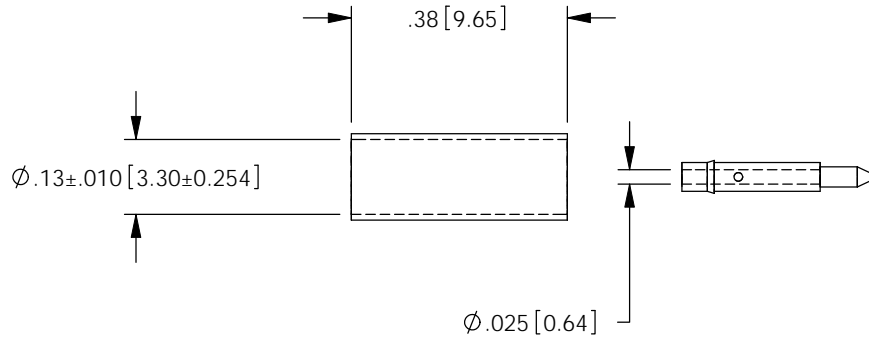
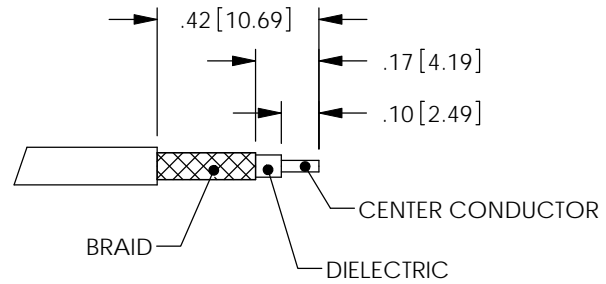


THE INFORMATION CONTAINED IN THIS DRAWING IS THE SOLE PROPERTY OF L-COM, INC. ANY REPRODUCTION IN PART OR WHOLE WITHOUT THE WRITTEN PERMISSION OF L-COM, INC. IS PROHIBITED.

REVISIONS			
REV	DESCRIPTION	DATE	APPROVED
D	ECN 99999: REVISED CABLE STRIP VIEW, NEW FORMAT	5/18/09	D.FRISIELLO



RECOMMENDED
FERRULE & PIN
CRIMP SIZE



RECOMMENDED
CABLE STRIPPING
DIMENSIONS

NOTES:

MATERIAL:
BODY: BRASS
FERRULE: BRASS
PIN: BRASS
INSULATOR: PTFE

FINISH:
BODY: GOLD PLATE
FERRULE: GOLD PLATE
PIN: GOLD PLATE

ELECTRICAL:
IMPEDANCE: 50 OHM

PACKAGING:
INDIVIDUALLY PACKAGE EACH ASSEMBLY UTILIZING APPROPRIATE SIZED BAG

APPLICATION:
RG316, RG188, AND RG174 CABLE ASSEMBLIES

RoHS Compliant ✓

UNLESS OTHERWISE SPECIFIED, DIMENSIONS ARE IN INCHES [mm] DIMENSIONAL TOLERANCES: .X = ±.1 .XX = ±.01 .XXX = ±.005 ANGULAR TOLERANCES: ALL = ± 1°	APPROVALS	DATE		45 BEECHWOOD DRIVE NORTH ANDOVER, MA 01845	
	DRAWN BY TJC	05/06/2002			
	CHECKED BY DFP	06/10/2002	CATEGORY COAXIAL		
	APPROVED BY CM	06/11/2002	PRODUCT DESCRIPTION SMA CRIMP PLUG, GOLD PLATED		
PROJECTION 	COLOR VARIATIONS MAY OCCUR	SIZE A	FSCM NO. 43321	DWG. NO. BAC03A-G	REV. D
		SCALE: NONE	CAD FILE: BAC03A-G.SLDDRW		SHEET 1 OF 1