

Assembly instruction Series MCX No. 27306

Tools and materials required:

Stanley-blade
Scissors
Crimp tool (see table below)

Straight connectors for flexible cables

Cable entry : SUHNER Full-Crimp

Connector types : (e.g.)

11 MCX 50-2-15

11 MCX 50-2-16

This connector
is supplied
in 3 parts

Suitable cable :(e.g.)

RG 174/U
RG 188 A/U
K 02252 D

Central contact :

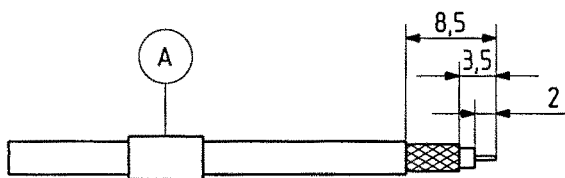
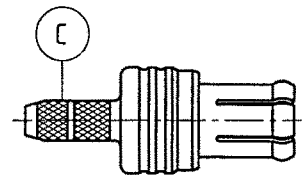
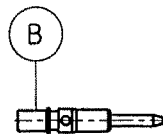
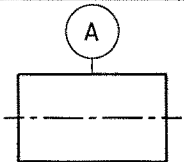
cavity 1

Braid :

cavity A

Crimp tool :

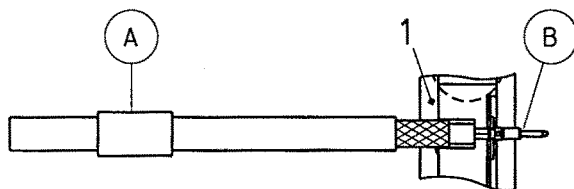
1,2,A (red)



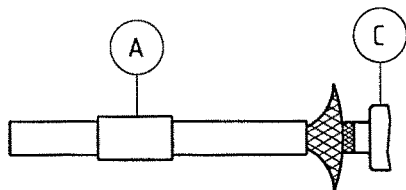
Slide ferrule A onto cable.

Prepare cable according to diagram.

CAUTION: Do not damage braid, dielectric and inner conductor of cable.

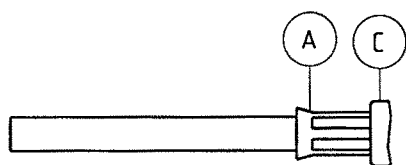


Push contact B over inner conductor of cable to about cable-dielectric and crimp with cavity 1.



Splay out braid and insert cable in connector body C.

Ensure that braid lies above the crimp neck.



Slide ferrule A over braid and crimp

to connector body C as close as possible.

SUHNER's skilled staff and specialised equipment are available to carry out complete R.F.lead-assembly on your behalf. We mount your connectors on cables at economic prices! Please contact our representative for further details of this service



HUBER + SUHNER AG CH-9100 HERISAU

Deutscher Text: siehe Rückseite